

28 January 2026

Full renewal of the official websites of KIX, ITAMI and KOBE

- New design and functionality for enhanced usability and strengthened communication -

Kansai Airports Group is pleased to announce the full renewal of the official websites for Kansai International Airport (KIX), Osaka Itami Airport (ITAMI), and Kobe Airport (KOBE) as of 27 January 2026.

The websites have been renewed with improved content structure, design, and functionality to help airport users easily find the information they need and take the next action smoothly. Users can find information useful in various situations, such as dining and shopping at the airports, participating in events, enjoying aircraft viewing, as well as navigating departure, arrival and transit processes. The websites also offer improved accessibility to real-time flight information as well as commercial and restaurant information. With the facility search linked with the floor map, users can go through the process from searching where they want to go, locating it, and checking the details more seamlessly.

In addition, the main visuals of the websites feature original illustrations highlighting the unique characteristics of each airport in this integrated design for a better user experience, to intuitively convey the appeal of the neighboring areas around the airports and the excitement of travel for visitors in and out of Japan.



Uniweb, an accessibility support tool, has been integrated into the websites, the first implementation among Japanese airports, to provide a browsing environment accessible to all users, with functions such as text-to-speech and adjustable font sizes.

Kansai Airports Group will continue to strive for better convenience and stronger communication and create a comfortable and enjoyable airport experience.

Kansai International Airport (KIX) website (URL: <https://www.kansai-airport.or.jp/>)

Osaka Itami Airport (ITAMI) website (URL: <https://www.osaka-airport.co.jp/>)

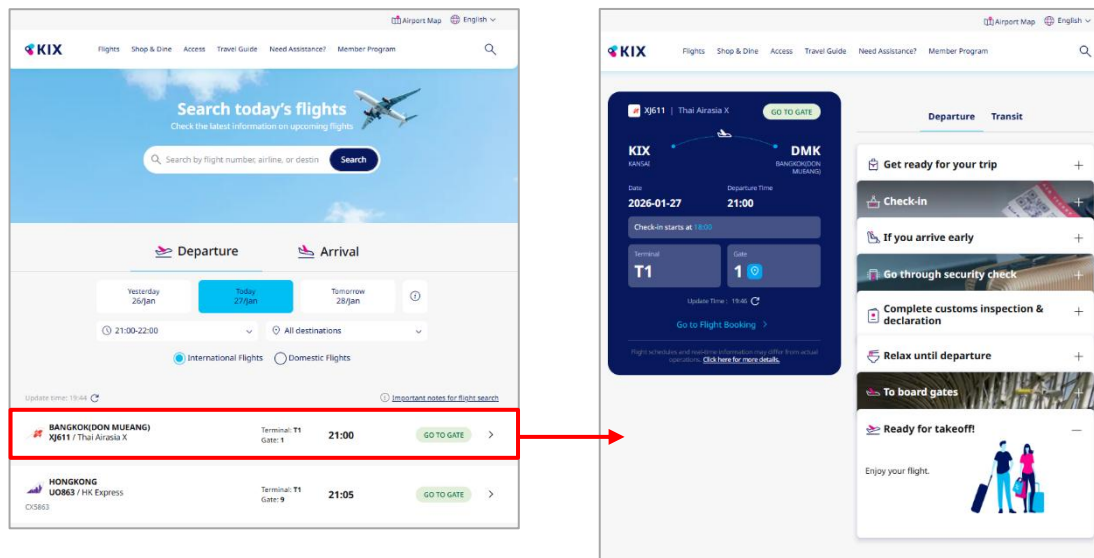
Kobe Airport (KOBE) website (URL: <https://www.kairport.co.jp/>)

*Available in Japanese, English, Chinese (simplified and traditional), and Korean

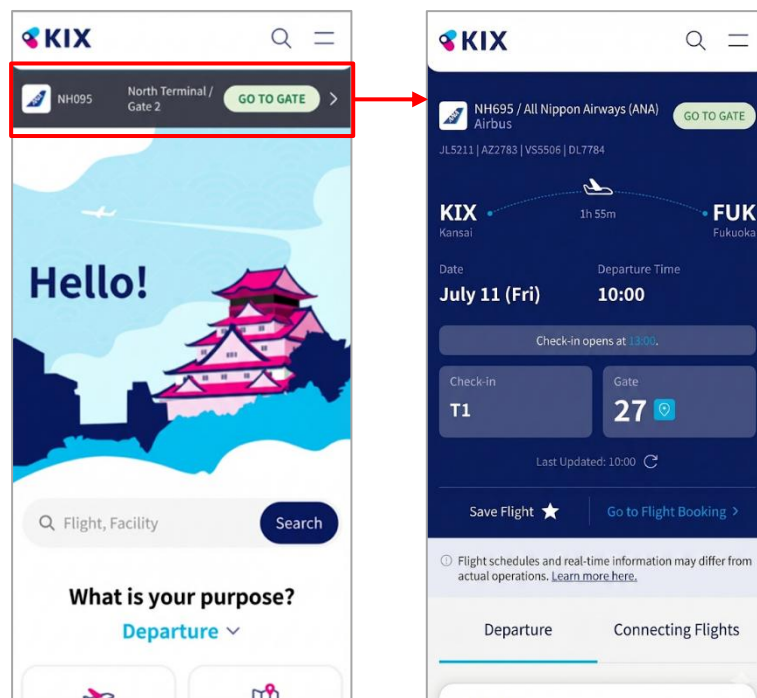
Key renewal points

- Enhanced real-time flight information display

The page shows useful information for travel preparation, boarding and spending time at the airports, to provide pre-travel support to airport users. An additional feature allowing users to bookmark their flights is scheduled. This feature will notify users when and which gate they need to go to for flights they have bookmarked in advance.

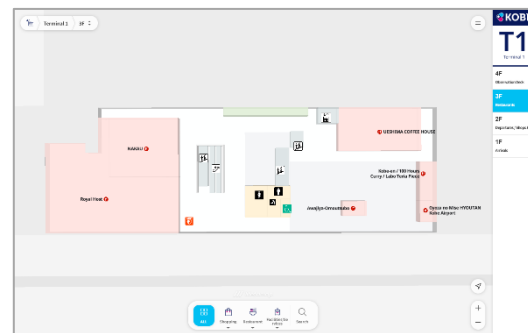
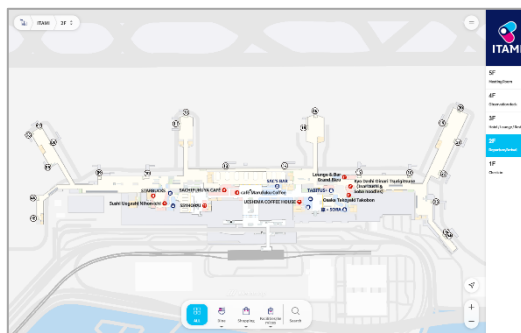
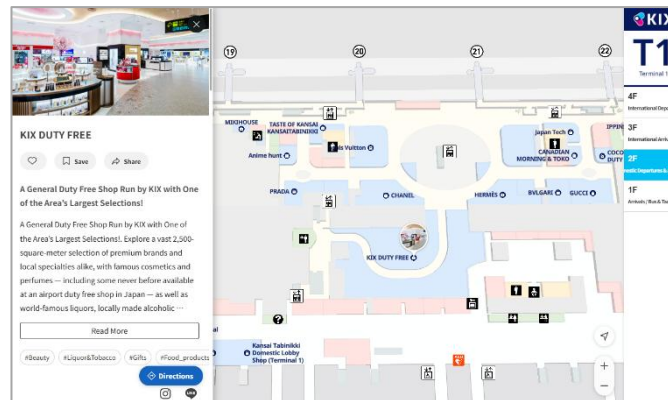


This is the scheduled addition of the bookmark function.



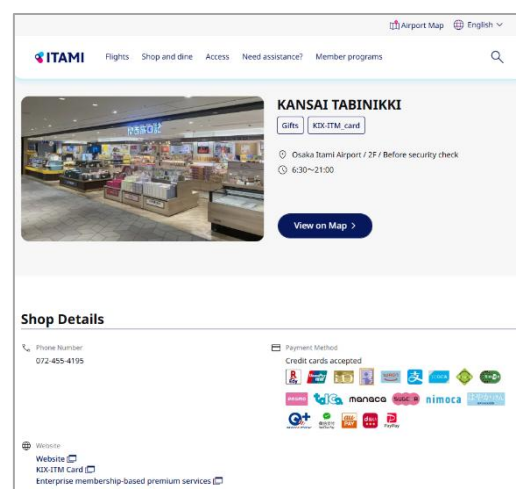
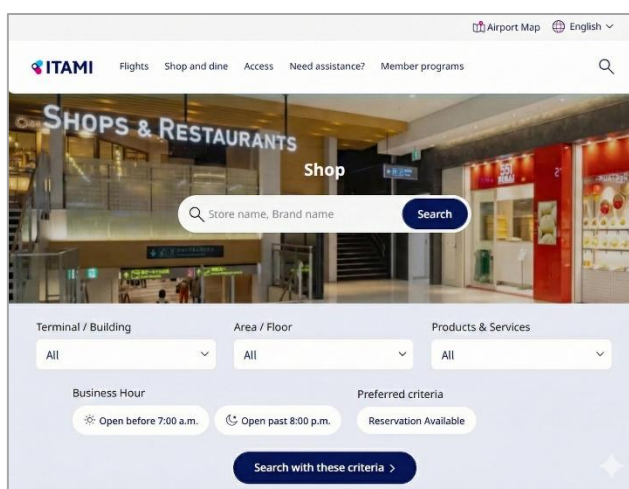
- Improved floor map

The floor map is now interactive, and airport users can search for stores and facilities so that they can navigate the airport more easily. This will provide better convenience and comfort. A route search function is scheduled to be added for greater efficiency in facility guidance.



- Optimization of food & beverages, retail and service information

Items in the search function have been organized for better convenience. Information displayed on each store or facility prioritizes the categories most relevant to airport users, such as location, opening hours, payment methods, and other key details. This function is embedded in the interactive floor map to offer better airport experience.





Kansai Airports was established by a consortium made up of VINCI Airports and ORIX Corporation as its core members. Kansai Airports took over the operations of Kansai International Airport ("KIX") and Osaka Itami Airport ("ITAMI") from New Kansai International Airport Company ("NKIAC") and has been operating the two airports since 1 April 2016.

Kansai Airports Kobe, Kansai Airports' wholly-owned subsidiary, took over the operations of Kobe Airport ("KOBE") from Kobe City and started its business as an operating company on 1 April 2018.

Under the concept of "One Kansai Airports Group", Kansai Airports group strives to continuously improve its services for all airport guests through appropriate investments and efficient operations, with safety and security being the top priority. Kansai Airports group aims to maximize the potential of the three airports, for the benefit of the communities they serve.

For more information, please visit : <http://www.kansai-airports.co.jp/en/>

Kansai Airports

Location	1-banchi, Senshu-kuko kita, Izumisano-shi, Osaka	Shareholders	ORIX 40%, VINCI Airports 40%, Other investors 20% ¹
Company Representatives	Representative Director and CEO: Yoshiyuki Yamaya Representative Director and Co-CEO: Benoit Rulleau		
Business Scope	Operation and management services, etc. of Kansai International Airport and Osaka Itami Airport		

Kansai Airports Kobe

Location	1-ban, Kobe-kuko, Chuo-ku, Kobe-shi, Hyogo	Shareholder	Kansai Airports 100%
Company Representatives	Representative Director and CEO: Yoshiyuki Yamaya Representative Director and Co-CEO: Benoit Rulleau		
Business Scope	Operation and management services, etc. of Kobe Airport		



ORIX Group was established in 1964 and is a corporate group active around the world in financing and investment, life insurance, banking, asset management, real estate, concession, environment and energy, automobile-related services, industrial/ICT equipment, ships and aircraft. We operate in around 30 countries and regions with approximately 34,000 people. We unite globally around our Purpose: "Finding Paths. Making Impact.", combining diverse expertise and innovative thinking to help our world develop in a sustainable way.

For more information: <https://www.orix.co.jp/grp/en/>



VINCI Airports, as the leading private airport operator in the world, manages the development and operation of more than 70 airports located in 14 countries. VINCI Airports draws on its expertise as a comprehensive integrator to develop, finance, build and operate airports, leveraging its investment capability and know-how to optimise operational performance and modernise infrastructure while bringing about their environmental transition. In 2016, VINCI Airports became the first airport operator to commit to an international environmental strategy, setting itself the aim of reaching zero net emissions (scope 1 and 2) across the network by 2050 while supporting its stakeholders' transition.

For more information: www.vinci-airports.com

¹ ASICS Corporation; Iwatani Corporation; Osaka Gas Co., Ltd.; Obayashi Corporation; OMRON Corporation; The Kansai Electric Power Company, Incorporated; Kintetsu Group Holding Co., Ltd.; Keihan Holdings Co., Ltd.; Suntory Holdings Limited; JTB Corp.; Sekisui House, Ltd.; Daikin Industries, Ltd.; Daiwa House Industry Co., Ltd.; Takenaka Corporation; Nankai Electric Railway Co., Ltd.; NTT WEST, Inc.; Panasonic Holdings Corporation; Hankyu Hanshin Holdings, Inc.; Rengo Co., Ltd.; The Senshu Ikeda Bank, Ltd.; Kiyo Holdings, Inc.; The Bank of Kyoto, Ltd.; THE SHIGA BANK, LTD.; The Nanto Bank, Ltd.; Nippon Life Insurance Company; Mizuho Bank, Ltd.; Sumitomo Mitsui Trust Bank, Limited; MUFG Bank, Ltd.; Resona Bank, Limited; and the Private Finance Initiative Promotion Corporation of Japan.