

2 June 2026

New International Commercial Area Opens Today at Kansai International Airport

— The Final Step in a Renovation Journey That Began in 2021 —

Kansai Airports announces the launch of a new international commercial area on 2 June 2026, as part of Phase 4, the final stage of the Terminal 1 renovation at Kansai International Airport. To mark the opening, a ribbon-cutting ceremony was held featuring Yoshiyuki Yamaya, Representative Director and CEO, and Benoît Rulleau, Representative Director and Co-CEO, along with other officials and partners of Kansai International Airport.



The newly opened commercial area is located within a section that extends the central international departures area, which first opened in December 2023, to both the north and south. It brings together a total of 24 new outlets, including luxury brands, specialty retail stores offering popular regional products, and a variety of dining options, creating a space where passengers can enjoy a richer pre-departure experience.

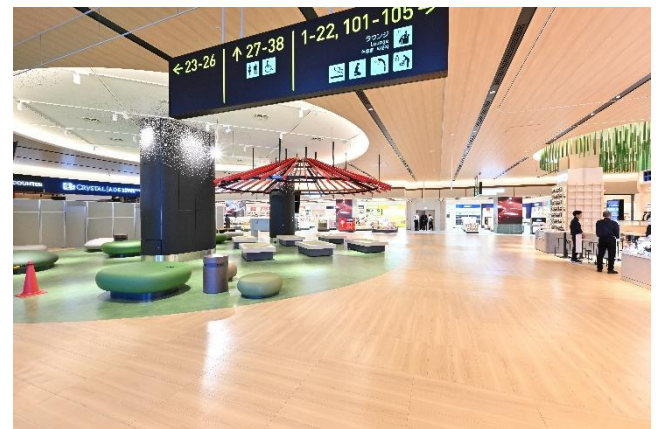
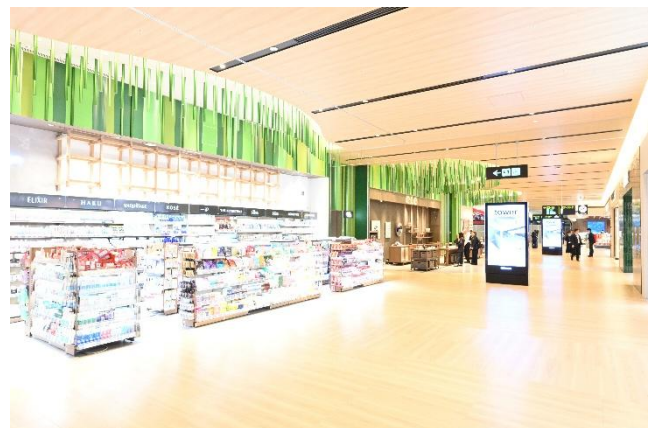
In addition, a new “Call to Gate”* initiative has been introduced to streamline boarding announcements by announcing gate numbers at the appropriate time. This allows passengers to spend more time in the enhanced central international departures area before proceeding to their gates, offering a more relaxed pre-departure experience.

With the opening of this area, the Terminal 1 renovation project at Kansai International Airport, which began in 2021, has now been fully completed. As a result, the central international area has expanded to approximately 1.6 times its pre-renovation size.

Kansai Airports Group will continue to work in collaboration with its partners to create new travel experiences as the gateway to the Kansai region.

*“Call to Gate” is a system that controls the timing of gate announcements.

New Commercial Area Expanded in Phase 4



* For more details, please visit the [[Kansai International Airport website](https://www.kansai-airports.co.jp/)].



Contact:
Group Corporate Communications
Department
Kansai Airports
pr@kansai-airports.co.jp



Kansai Airports was established by a consortium made up of VINCI Airports and ORIX Corporation as its core members. Kansai Airports took over the operations of Kansai International Airport (“KIX”) and Osaka Itami Airport (“ITAMI”) from New Kansai International Airport Company (“NKIAC”) and has been operating the two airports since 1 April 2016.

Kansai Airports Kobe, Kansai Airports’ wholly-owned subsidiary, took over the operations of Kobe Airport (“KOBE”) from Kobe City and started its business as an operating company on 1 April 2018.

Under the concept of “One Kansai Airports Group”, Kansai Airports group strives to continuously improve its services for all airport guests through appropriate investments and efficient operations, with safety and security being the top priority. Kansai Airports group aims to maximize the potential of the three airports, for the benefit of the communities they serve.

For more information, please visit : <http://www.kansai-airports.co.jp/en/>

Kansai Airports

Location	1-banchi, Senshu-kuko kita, Izumisano-shi, Osaka	Shareholders	ORIX 40%, VINCI Airports 40%, Other investors 20% ¹
Company Representatives	Representative Director and CEO:Yoshiyuki Yamaya Representative Director and Co-CEO: Benoit Rulleau		
Business Scope	Operation and management services, etc. of Kansai International Airport and Osaka Itami Airport		

Kansai Airports Kobe

Location	1-ban, Kobe-kuko, Chuo-ku, Kobe-shi, Hyogo	Shareholder	Kansai Airports 100%
Company Representatives	Representative Director and CEO: Yoshiyuki Yamaya Representative Director and Co-CEO: Benoit Rulleau		
Business Scope	Operation and management services, etc. of Kobe Airport		



ORIX Group was established in 1964 and is a corporate group active around the world in financing and investment, life insurance, banking, asset management, real estate, concession, environment and energy, automobile-related services, industrial/ICT equipment, ships and aircraft. We operate in around 30 countries and regions with approximately 36,000 people. We unite globally around our Purpose: “Finding Paths. Making Impact.”, combining diverse expertise and innovative thinking to help our world develop in a sustainable way.

For more information: <https://www.orix.co.jp/grp/en/>



VINCI Airports, as the leading private airport operator in the world, manages the development and operation of more than 70 airports located in 14 countries. VINCI Airports draws on its expertise as a comprehensive integrator to develop, finance, build and operate airports, leveraging its investment capability and know-how to optimise operational performance and modernise infrastructure while bringing about their environmental transition. In 2016, VINCI Airports became the first airport operator to commit to an international environmental strategy, setting itself the aim of reaching zero net emissions (scope 1 and 2) across the network by 2050 while supporting its stakeholders’ transition.

For more information: www.vinci-airports.com

¹ ASICS Corporation; Iwatani Corporation; Osaka Gas Co., Ltd.; Obayashi Corporation; OMRON Corporation; The Kansai Electric Power Company, Incorporated; Kintetsu Group Holding Co., Ltd.; Keihan Holdings Co., Ltd.; Suntory Holdings Limited; JTB Corp.; Sekisui House, Ltd.; Daikin Industries, Ltd.; Daiwa House Industry Co., Ltd.; Takenaka Corporation; NANKAI Co., Ltd.; NTT WEST, Inc.; Panasonic Holdings Corporation; Hankyu Hanshin Holdings, Inc.; Rengo Co., Ltd.; The Senshu Ikeda Bank, Ltd.; Kiyo Holdings, Inc.; The Bank of Kyoto, Ltd.; THE SHIGA BANK, LTD.; The Nanto Bank, Ltd.; Nippon Life Insurance Company; Mizuho Bank, Ltd.; Sumitomo Mitsui Trust Bank, Limited; MUFG Bank, Ltd.; Resona Bank, Limited; and the Private Finance Initiative Promotion Corporation of Japan.